

EXPANDER SERIES

THE WORLD'S MOST POWERFUL FLOOR GRINDING AND POLISHING MACHINE



Professional Floor Care Systems

02 9742 6244 | www.klindex.com.au

EXPANDER 1000

An Outstanding High Quality and Popular machine at a Practical price



Remote Control
with Auto Pilot System

Expander 1000 HD with the Remote or Auto Pilot control functions the worker can regulate both the Speed and Turning Directions of the Machine and Planetary Head with EASE and also comes standard with Drift Control and Emergency Safety STOP Functions.

MAIN FEATURES

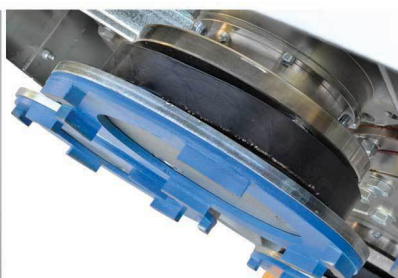
- ✔ Single button system to rotate the planetary 90° that allows fast and easy change of tools.
- ✔ Fully Adjustable Planetary to allow bigger forward cutting area.
- ✔ Battery Powered for independent traction control when unplugged.
- ✔ Auto-Levelling Planetary System.
- ✔ Strong Gear Box with thermo-hardened steel gears for a longer life.
- ✔ Adjustable working pressure from 500 to 1250 kg.
- ✔ Reduced noise control.
- ✔ Attachable third wheel for ease of transport and loading.
- ✔ Powered Planetary lifting system.

ADDITIONAL FEATURES

- ✔ To avoid work delays the machine can also be operated manually with the included special handle and independent manual hydraulic pump.



Remote Control & Auto-Pilot System



Anti-shock System



Semi-automatic Planetary Lifting



Full Metal Gear Box



Front Wheel for Easy Transportation



Adjustable Work Pressure



Auto Levelling Planetary System



6 Nos 240mm Large Tools

EXPANDER Series

Expander Series: Expander range are a series of powerful and reliable grinding and polishing machines available from 5HP to 25HP ideal for medium to large sized surfaces. Most come available in either Remote or Auto Pilot Function control that allows the user to regulate the speed, turning direction, grinding head pressure and drift control of both the Machine and Planetary with relative ease.

MAIN FEATURES

- ✓ Easy to handle and transport with the remote or auto control functions
- ✓ Working range from 530mm to 950mm
- ✓ 3 large sized 200mm to 240mm tools
- ✓ Auto-Levelling Planetary System.
- ✓ Strong Gear Box with Thermo-hardened steel gears for a longer life.
- ✓ Reduced noise control during work.
- ✓ Third attachable wheel for ease of transport and loading.
- ✓ Powered Planetary lifting system.

| Estimated Production | Expander 1000 | Expander 950 | Expander 850 | Expander 750 | Expander 650 | Expander 580 | Expander 530 |
|-----------------------------------|---------------------------|---------------------------|---------------------------|---------------------------|--------------------------|-------------------------|-------------------------|
| Superconcrete 7 Steps | 40-45 m ² /h | 30-35 m ² /h | 25-30 m ² /h | 25-30 m ² /h | 20-25 m ² /h | 10-15 m ² /h | 10-12 m ² /h |
| Concrete Grinding 1 Step | 160-220 m ² /h | 100-130 m ² /h | 100-130 m ² /h | 100-130 m ² /h | 50-100 m ² /h | 40-80 m ² /h | 40-70 m ² /h |
| Terrazzo Polishing 5 Steps | 45-60 m ² /h | 35-45 m ² /h | 30-40 m ² /h | 30-40 m ² /h | 20-30 m ² /h | 9-15 m ² /h | 9-12 m ² /h |
| Resin Removing 1 Step | 200-300 m ² /h | 150-180 m ² /h | 100-150 m ² /h | 100-150 m ² /h | 80-120 m ² /h | 40-80 m ² /h | 40-70 m ² /h |
| Varnish Removing 1 Step | 200-300 m ² /h | 150-180 m ² /h | 100-150 m ² /h | 100-150 m ² /h | 80-120 m ² /h | 40-80 m ² /h | 40-70 m ² /h |
| Marble Polishing 5 Steps | 30-50 m ² /h | 25-35 m ² /h | 20-30 m ² /h | 20-30 m ² /h | 12-25 m ² /h | 7-12 m ² /h | 7-10 m ² /h |
| Granite Polishing 7 Steps | 20-30 m ² /h | 15-20 m ² /h | 10-15 m ² /h | 9-12 m ² /h | 8-10 m ² /h | 5-7 m ² /h | 5-7 m ² /h |

Production numbers may vary according to surface conditions, diamonds used, equipment, operator...etc.



Technical Data

| Model | Remote Version | Motor | Volt | Hertz | Amps | Speed Tools | Working Width | Tool Size | Water Tank | Dimensions | Weight |
|---------------|----------------|----------|----------|-------|------|--------------|---------------|-----------|------------|-------------|-----------|
| Expander 1000 | Yes | 25 HP | 380-480 | 50/60 | 35 | 300-1300 rpm | 1000mm | 6x240mm | 46 L | 170x150x105 | 1313Kg |
| Expander 950 | Yes | 25 HP | 380-480V | 50/60 | 32 | 300-1300 rpm | 950mm | 3x340mm | 46 L | 150x150x95 | 484Kg |
| Expander 850 | Yes | 25-20 HP | 380-480V | 50/60 | 32 | 300-1300 rpm | 850mm | 3x240mm | 46 L | 150x150x95 | 484-441Kg |
| Expander 750 | Yes | 20-15 HP | 380-480V | 50/60 | 25 | 300-1300 rpm | 750mm | 3x240mm | 46 L | 145x145x80 | 423-360Kg |
| Expander 650 | Yes | 15-10 HP | 380-480V | 50/60 | 25 | 300-1300 rpm | 650mm | 3x240mm | 46 L | 140x145x68 | 370-320Kg |
| Expander 580 | No | 5 HP | 380-480V | 50/60 | 16 | 300-1300 rpm | 580mm | 3x240mm | 18 L | 118x125x63 | 155Kg |
| Expander 530 | No | 4 HP | 220-240V | 50/60 | 16 | 900 rpm | 530mm | 3x200mm | 18 L | 118x125x57 | 135Kg |



EXPANDER SERIES

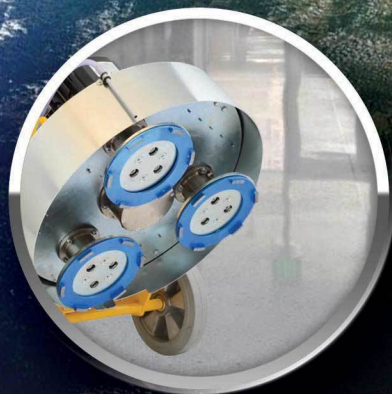
THE WORLD'S MOST POWERFUL
FLOOR GRINDING & POLISHING MACHINES



BUSH HAMMERING
ON CONCRETE



GRINDING & POLISHING
CONCRETE



GRINDING & POLISHING
TERRAZZO



STONE RESTORATION
WITH ELICA PADS



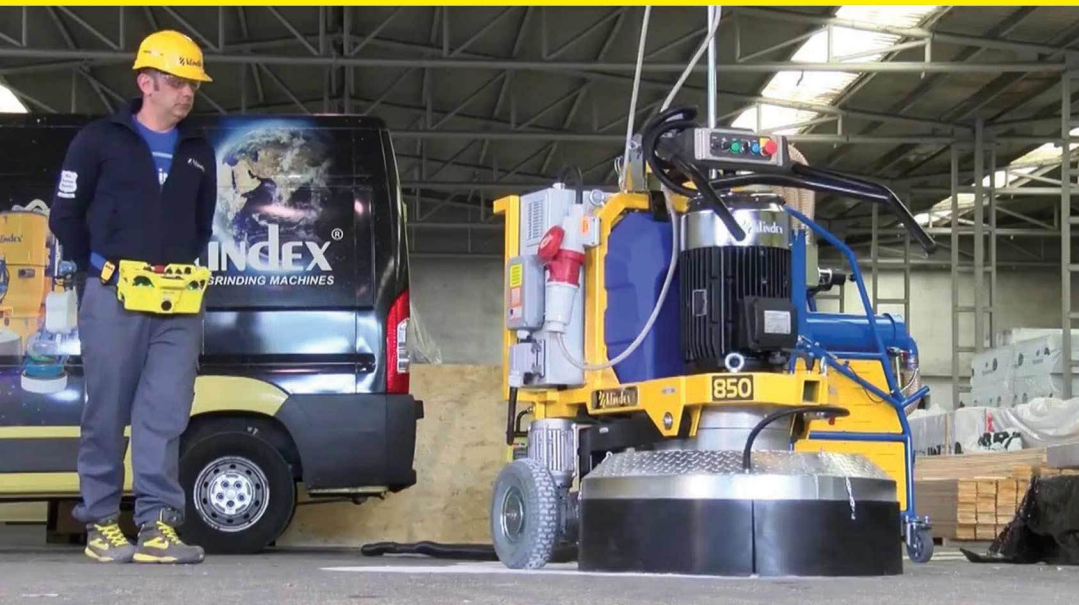
DIAMOND BRUSH FLOORING FOR
ANTI-SLIP FLOORING



GRINDING EPOXY PAINT OFF
ON CONCRETE



Technological Advantages of EXPANDER



Remote Control with Autopilot Function

The Auto Pilot is designed to allow the machine to work independently of the operator and run automatically, drastically reducing your labour costs.



Remote Control with Auto-pilot Functions

The new range of remote control Expanders significantly reduces the stress on the operator while increasing productivity - a perfect combination. The addition of the Auto Pilot is the next step in the evolution of floor grinding. The Auto Pilot is designed to allow the machine to work independently of the operator and run automatically, drastically reducing your labour costs.



Planetary Head

Planetary head is 100% tempered metal and geared driven not belt. The main disc and the satellites always run, allowing the machine to work very hard with high performance. The working pressure of the Planetary can be adjusted giving pressure on the front or on the backside. Giving more pressure in front the machine cuts faster and deeper. NO BELTS to break!



Motor Engine

Motor 25 HP
Voltage 380-450 volt
Amper 32



Steel Priority

Steel frame painted with metallic varnish. Aluminium carter covering the Planetary. The metal covering protects the diamond tools and allows it to work very close to the wall.



Variable speed head that adjusts

From 300 up to 1300 rpm



Adjustable working head pressure

The pressure is adjusted by "Electronic device", not by adding weight manually.



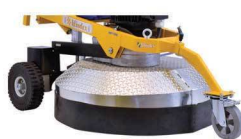
Water Tank

The tank is very important for working wet. When working dry the diamond doesn't grip and skates on the surface of the concrete. It is also important for polishing marble, terrazzo and granite.



Handle

Adjustable position of the handle for a comfortable working position. It also can be reversed to allow the operator to drive the machine from in front and not only from the rear.



Third insertable front wheel

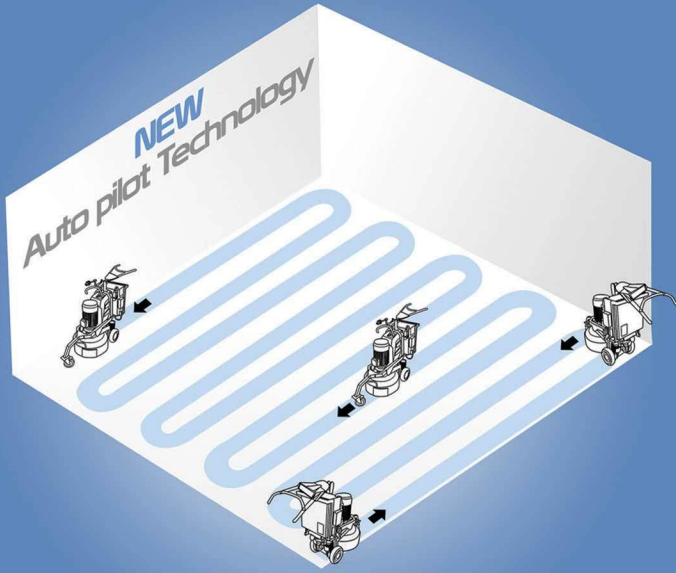
Third front wheel that offers the following advantages: • It makes for easy transportation, allows to regulate the working pressure, allows to inclination on the planetary head which is useful when working on very uneven floors.



Battery Engine (backup)

With a back up battery engine for remote control machines, you don't have to run a power supply or worry about pushing your machine from the vehicle or the jobsite. The battery charges while the machine is in use and hooked up to a power supply. This option allows you to load and unload the machine with ease and decreases the risk of injuries. Check to see if the competitors machine has such an option allowing you to move, load and unload the machine without risking injuries.

EXPANDER Series



MAKE YOUR FLOOR *Super Flat* WITH KLINDEX



The powerful Klindex rigid head Expander range is the ideal grinding machine to achieve perfect flat floor with concrete, marble, granite, terrazzo or limestone.

Rigid Head Machines - Making the floor FLAT



Effective weight distribution

The motor placed directly over the top of the planetario with three well balanced heads for perfect balance and highest grinding pressure available (this balance allows it to work as well on marble/granite as it can on concrete) Many competitors machine can't work on marble.

Rigid head



The design of the Expander range doesn't focus weight and pressure on the chassis to create a "floating head". Instead, Klindex has designed a rigid head with very little flex which ensures the flattest floor possible and reduces the effect of waviness that can be seen on many floors that have been finished with "floating head" machines. Also significantly increases grinding head pressure further enhancing productivity.



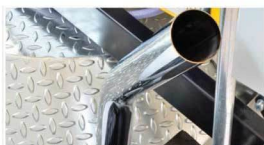
Easy maintenance

Simply clean and grease machine every job.



No Belts, only steel gears

No belt breakages, no loss of torque on your machine with no belt slipping. The Klindex machinery uses thermal hardened steel gears, greatly increasing the performance of the machines and reducing the down time suffered with belt driven machines.



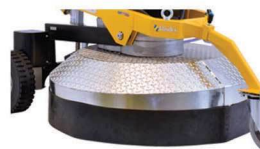
Dust control Optimized

Vacuum ports for working dry and Free of Dust.



Inverter with Display for fast diagnostics

It is possible to read the display to know what is happening with the machine without opening the Inverter door.



Splash Guard

Strong Perimetral neoprene splash guard.

EXPANDERS AROUND THE WORLD



TRANSFORM YOUR ORDINARY FLOOR INTO A REMARKABLY
POLISHED AND RESTORED FLOOR WITH
KLINDEX PROFESSIONAL FLOOR CARE SYSTEMS